

City of Duncanville

GPS Control Network



established by

The Wallace Group, Inc.
1825 Market Center Blvd., Suite 210
Dallas, Texas 75207-3330
214-747-3733

DUNCANVILLE
The perfect blend of family,
community and business.

December 2002

CITY OF DUNCANVILLE GPS CONTROL NETWORK

BASIS FOR CONTROL

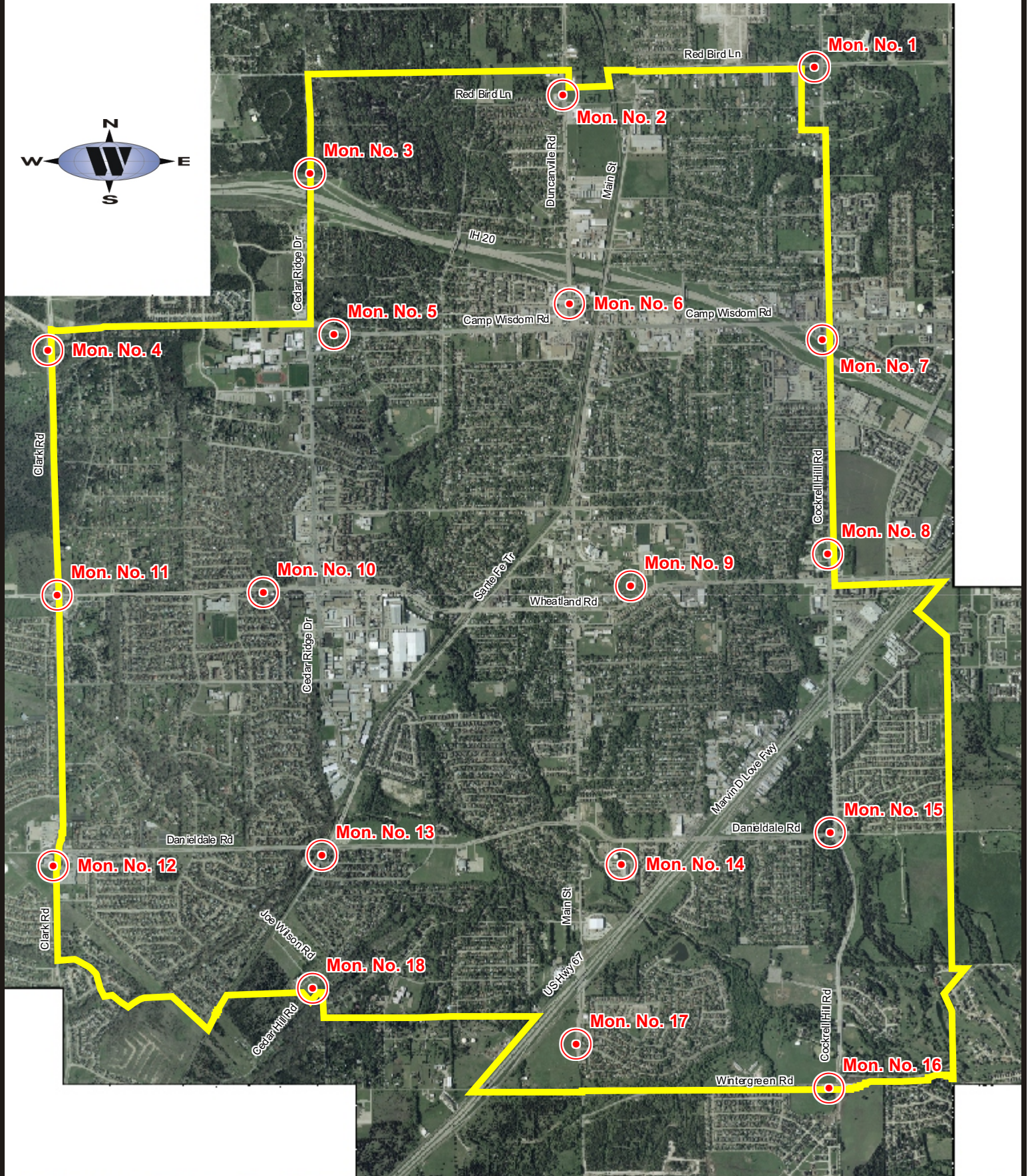
The values for the City of Duncanville GPS Control Network were established using Rapid Static data collection procedures during the month of December 2002. The Wallace Group, Inc., in conjunction with the City of Duncanville set all custom made 4 inch domed bronze monuments throughout the City at designated key areas. All fieldwork and post processing was performed by The Wallace Group. Final data sheets were published after consultation with the City of Duncanville.

Horizontal State Plane Coordinates (SPC) are on the Lambert Projection System – NAD83 (CORS96) – Texas Coordinate System (Texas North Central Zone 4202). A position was derived using the National Geodetic Service (NGS) OnLine Positioning User Service (OPUS) position for Monument No. 9 near the center of Duncanville, as a base point. All other monuments within the City of Duncanville are tied to a constellation of multiple observations (baselines) using 5 GPS receivers from this base point location. The position for a second monument (Mon. No. 14) based on this constellation compared favorably with a position derived by OPUS as an external check.

Federal Emergency Management Agency (FEMA) elevations were determined by adjusting the GPS Static observations with given data from Flood Insurance Rate Map (FIRM). The Map Number 48113CO470 J with an effective date of August 23, 2001 has a given elevation of 661.97 (NGVD29) for RM241. The conversion through NGS Vertical Conversion (Vertcon) converts this elevation from 661.97 (NGVD29 datum) to 661.98 (NAVD88 datum). From this reference point, set by The Wallace Group, the RM241 elevation was held for all vertical adjustments. GPS derived elevations were computed using a Geoid Model (GEOID99). Using this process, the given elevation of 636.01 (NGVD29) for RM244 shown on the same panel checked to the converted elevation of 636.03 (NAVD88), through a reference point. All NAVD88 elevations shown on the data sheets were then converted back to NGVD29 elevations using Vertcon for FEMA elevations.

In summary, The Wallace Group provided the City of Duncanville with a GPS Control Network based on the position of Monument No. 9 and the elevation of RM241. All data sheets will show State Plane Coordinates in both the Geodetic and grid formats. The horizontal data is referenced to Texas North Central Zone- 4202, in both U.S. Survey feet and meters. Vertical data is referenced to NAVD88 elevations and NGVD29. The FEMA datum in the Duncanville area is referenced to NGVD29.

GPS Control Network



CITY OF DUNCANVILLE

GPS CONTROL SHEET

Established By:
 The Wallace Group, Inc.
 (214) 747-3733

MONUMENT NAME: MON. NO. 1	DATE ESTABLISHED: DECEMBER 2002	COUNTY: DALLAS	STATE: TEXAS	MAPSCO PAGE NO. 62-R
NAD-83 (CORS 96) GEODETIC POSITION LATITUDE N 032° 40' 35.64655" LONGITUDE W 096° 53' 30.15859"		NAD-83 (CORS 96) STATE PLANE COORDINATES NORTH CENTRAL ZONE (METERS) NORTHING (Y) 2113142.6250 EASTING (X) 750823.8886		
ELLIPSOIDAL ELEVATION (METERS) 181.50 ELLIPSOIDAL HEIGHT (METERS) -26.66		NAD - 83 (CORS 96) STATE PLANE COORDINATES NORTH CENTRAL ZONE (U.S. SURVEY FEET) NORTHING (Y) 6932868.7621 EASTING (X) 2463328.0413		
NGVD-29 ELEV: 682.96' (FEMA) (U.S. SURVEY FEET)		NAVD-88 ELEVATION: 682.95' (U.S. SURVEY FEET)		

NOTE:

4" DIAMETER DOMED BRONZE DISK SET IN THE STORM DRAIN INLET APPROXIMATELY 87' WEST OF THE CENTERLINE OF COCKRELL HILL ROAD ON THE SOUTH SIDE OF THE MEDIAN OF W. RED BIRD LANE. IN THE CITY OF DALLAS. APPROX. 310' EAST OF DUNCANVILLE CITY LIMITS.

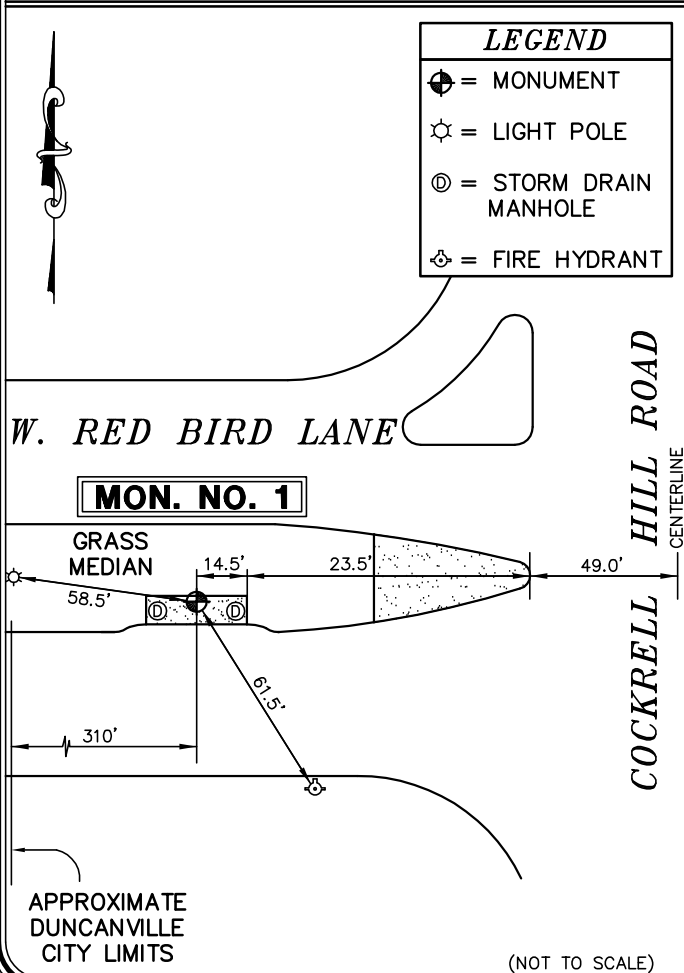
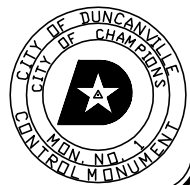


PHOTO TAKEN FROM WEST OF THE MONUMENT LOOKING EAST TOWARD COCKRELL HILL ROAD



CITY OF DUNCANVILLE

GPS CONTROL SHEET

Established By:
W The Wallace Group, Inc.
 (214) 747-3733

MONUMENT NAME: MON. NO. 2	DATE ESTABLISHED: DECEMBER 2002	COUNTY: DALLAS	STATE: TEXAS	MAPSCO PAGE NO. 62-Q
NAD-83 (CORS 96) GEODETIC POSITION LATITUDE N 032° 40' 30.73062" LONGITUDE W 096° 54' 30.80284"		NAD-83 (CORS 96) STATE PLANE COORDINATES NORTH CENTRAL ZONE (METERS) NORTHING (Y) 2112967.1641 EASTING (X) 749246.5367		
ELLIPSOIDAL ELEVATION (METERS) 200.02 ELLIPSOIDAL HEIGHT (METERS) -26.70		NAD-83 (CORS 96) STATE PLANE COORDINATES NORTH CENTRAL ZONE (U.S. SURVEY FEET) NORTHING (Y) 6932293.1042 EASTING (X) 2458153.0125		
NGVD-29 ELEV: 743.86' (FEMA) (U.S. SURVEY FEET)		NAVD-88 ELEVATION: 743.85' (U.S. SURVEY FEET)		

NOTE:

4" DIAMETER DOMED BRONZE DISK IN A 12" DIAMETER CONCRETE MONUMENT SET APPROXIMATELY 199' NORTH OF THE CENTERLINE OF W. RED BIRD LANE IN THE GRASS MEDIAN OF N. DUNCANVILLE ROAD.

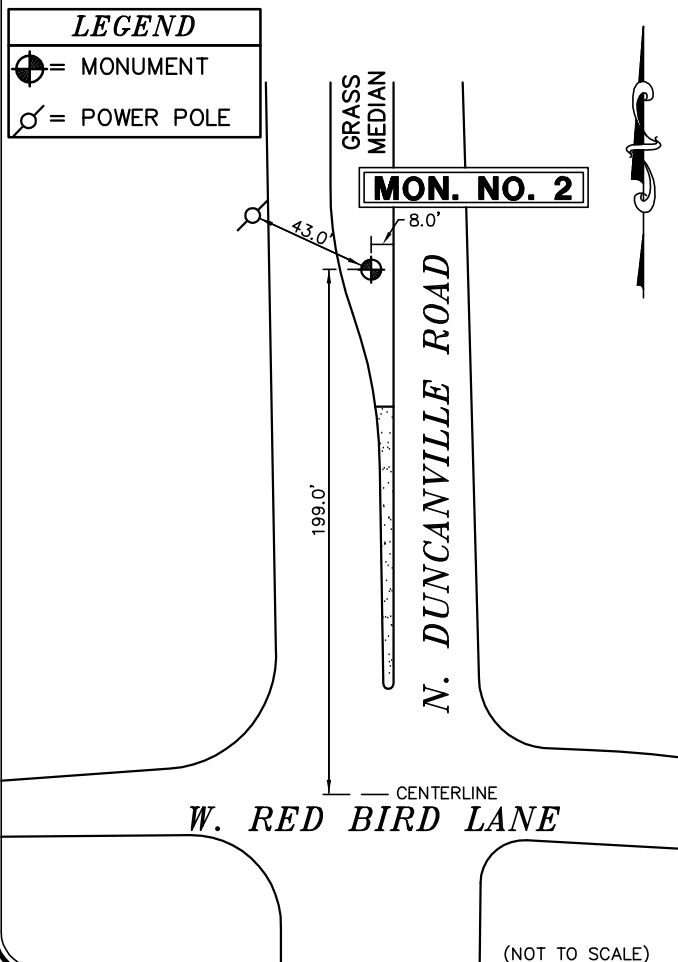


PHOTO TAKEN FROM NORTH OF THE MONUMENT LOOKING SOUTH TOWARD W. RED BIRD LANE



CITY OF DUNCANVILLE

GPS CONTROL SHEET

Established By:
W The Wallace Group, Inc.
 (214) 747-3733

MONUMENT NAME: MON. NO. 3	DATE ESTABLISHED: DECEMBER 2002	COUNTY: DALLAS	STATE: TEXAS	MAPSCO PAGE NO. 62-S
NAD-83 (CORS 96) GEODETIC POSITION LATITUDE N 032° 40' 15.37909" LONGITUDE W 096° 55' 31.94177"		NAD-83 (CORS 96) STATE PLANE COORDINATES NORTH CENTRAL ZONE (METERS) NORTHING (Y) 2112470.3621 EASTING (X) 747661.0638		
ELLIPSOIDAL ELEVATION (METERS) 201.95 ELLIPSOIDAL HEIGHT (METERS) -26.75		NAD-83 (CORS 96) STATE PLANE COORDINATES NORTH CENTRAL ZONE (U.S. SURVEY FEET) NORTHING (Y) 6930663.1797 EASTING (X) 2452951.3402		
NGVD-29 ELEV: 750.34' (FEMA) (U.S. SURVEY FEET)		NAVD-88 ELEVATION: 750.33' (U.S. SURVEY FEET)		

NOTE:
 4" DIAMETER DOMED BRONZE DISK IN A 12" DIAMETER CONCRETE MONUMENT SET APPROXIMATELY 172' NORTH OF THE CENTERLINE OF THE WESTBOUND ACCESS ROAD OF INTERSTATE HIGHWAY NO. 20 AND APPROXIMATELY 6' EAST OF THE EAST EDGE OF ASPHALT OF N. CEDAR RIDGE DRIVE.

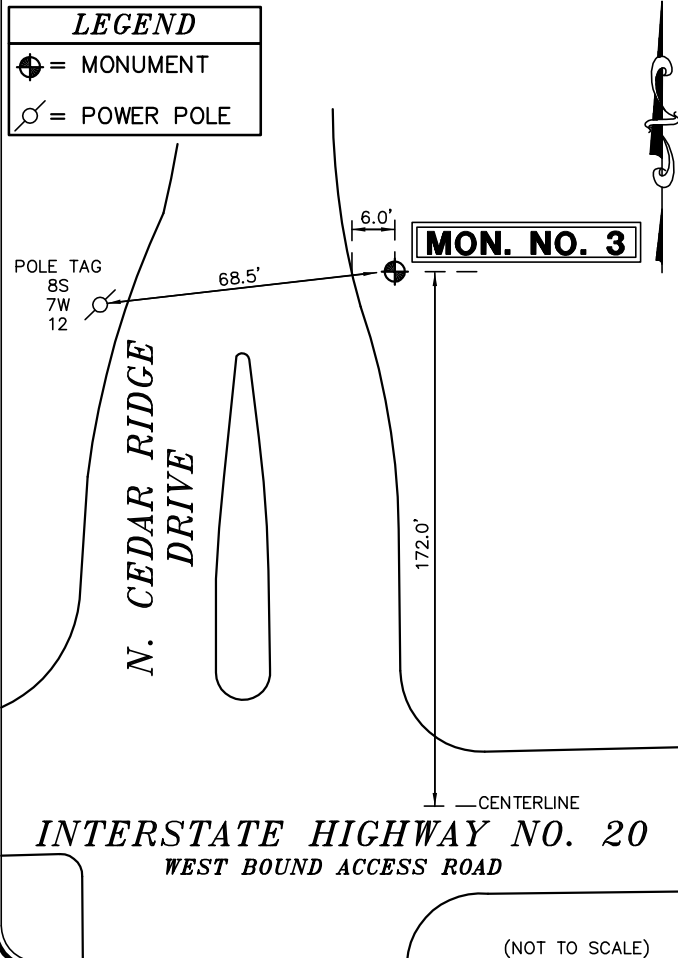
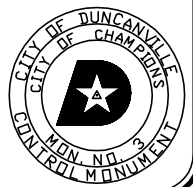


PHOTO TAKEN FROM NORTH OF THE MONUMENT LOOKING SOUTH TOWARD INTERSTATE HIGHWAY NO. 20 WESTBOUND ACCESS ROAD



CITY OF DUNCANVILLE

GPS CONTROL SHEET

Established By:
 The Wallace Group, Inc.
 (214) 747-3733

MONUMENT NAME: MON. NO. 4-A	DATE ESTABLISHED: OCTOBER 2008	COUNTY: DALLAS	STATE: TEXAS	MAPSCO PAGE NO. 61B-U
NAD-83 (CORS 96) GEODETIC POSITION LATITUDE N 032° 39' 40.388895" LONGITUDE W 096° 56' 35.222486"		NAD-83 (CORS 96) STATE PLANE COORDINATES NORTH CENTRAL ZONE (METERS) NORTHING (Y) 2111368.1461 EASTING (X) 746028.6034		
ELLIPSOIDAL ELEVATION (METERS) 204.39 ELLIPSOIDAL HEIGHT (METERS) -26.90		NAD-83 (CORS 96) STATE PLANE COORDINATES NORTH CENTRAL ZONE (U.S. SURVEY FEET) NORTHING (Y) 6927046.9925 EASTING (X) 2447595.5096		
NGVD-29 ELEV: 759.13' (FEMA) (U.S. SURVEY FEET)		NAVD-88 ELEVATION: 759.12' (U.S. SURVEY FEET)		

NOTE:
 4" DIAMETER DOMED BRONZE DISK SET ON THE NORTHEAST CORNER OF A STORM DRAIN INLET ON THE WEST SIDE OF THE MEDIAN ON N. CLARK ROAD APPROXIMATELY 400' SOUTH OF THE CENTERLINE OF W. CAMP WISDOM ROAD.

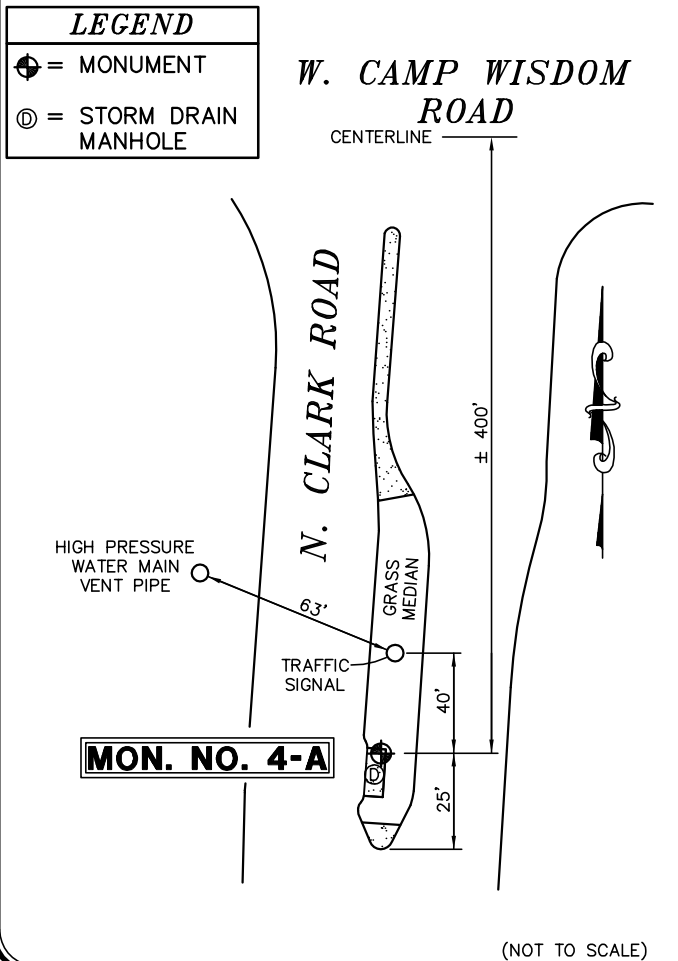


PHOTO TAKEN FROM SOUTH OF THE MONUMENT LOOKING NORTH TOWARD W. CAMP WISDOM ROAD



CITY OF DUNCANVILLE

GPS CONTROL SHEET

Established By:
 The Wallace Group, Inc.
 (214) 747-3733

MONUMENT NAME: MON. NO. 5	DATE ESTABLISHED: DECEMBER 2002	COUNTY: DALLAS	STATE: TEXAS	MAPSCO PAGE NO. 62-S
NAD-83 (CORS 96) GEODETIC POSITION LATITUDE N 032° 39' 42.95827" LONGITUDE W 096° 55' 26.71907"		NAD-83 (CORS 96) STATE PLANE COORDINATES NORTH CENTRAL ZONE (METERS) NORTHING (Y) 2111473.8912 EASTING (X) 747812.0921		
ELLIPSOIDAL ELEVATION (METERS) 200.20 ELLIPSOIDAL HEIGHT (METERS) -26.74		NAD-83 (CORS 96) STATE PLANE COORDINATES NORTH CENTRAL ZONE (U.S. SURVEY FEET) NORTHING (Y) 6927393.9246 EASTING (X) 2453446.8388		
NGVD-29 ELEV: 744.56' (FEMA) (U.S. SURVEY FEET)		NAVD-88 ELEVATION: 744.56' (U.S. SURVEY FEET)		

NOTE:

4" DIAMETER DOMED BRONZE DISK SET IN THE SOUTHEAST CORNER OF A STORM DRAIN INLET ON THE SOUTH SIDE OF W. CAMP WISDOM ROAD APPROXIMATELY 49.5' WEST OF THE CENTERLINE OF TOWER CREST DRIVE AND APPROXIMATELY 400' EAST OF N. CEDAR RIDGE DRIVE.

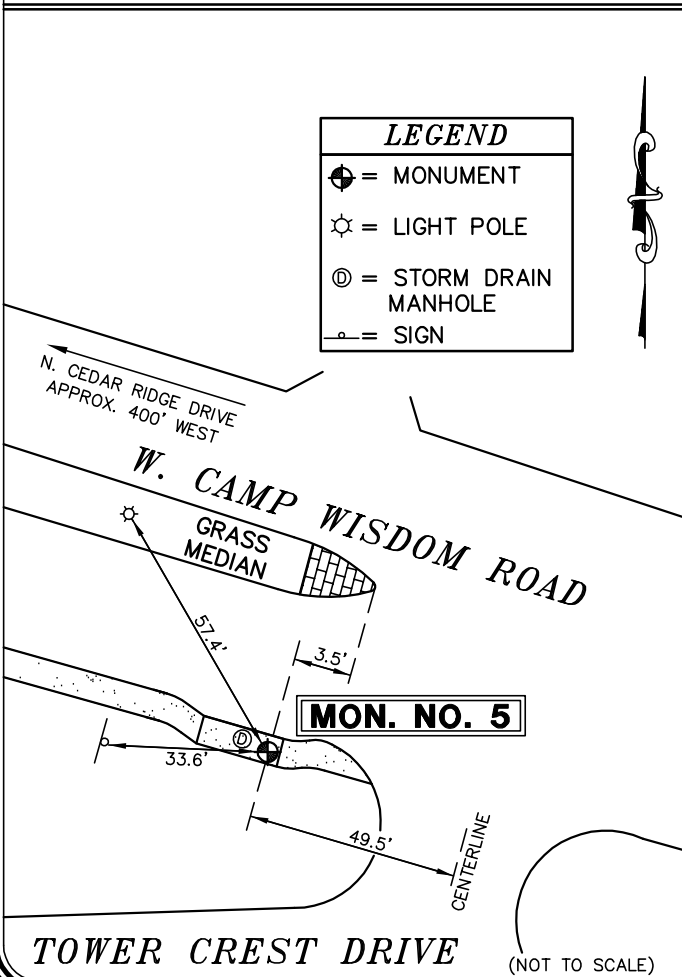


PHOTO TAKEN FROM EAST OF THE MONUMENT LOOKING WEST TOWARD N. CEDAR RIDGE DRIVE



CITY OF DUNCANVILLE

GPS CONTROL SHEET

Established By:
W The Wallace Group, Inc.
 (214) 747-3733

MONUMENT NAME: MON. NO. 6	DATE ESTABLISHED: DECEMBER 2002	COUNTY: DALLAS	STATE: TEXAS	MAPSCO PAGE NO. 62-U
NAD-83 (CORS 96) GEODETIC POSITION LATITUDE N 032° 39' 48.20082" LONGITUDE W 096° 54' 29.80002"		NAD-83 (CORS 96) STATE PLANE COORDINATES NORTH CENTRAL ZONE (METERS) NORTHING (Y) 2111657.7107 EASTING (X) 749292.5059		
ELLIPSOIDAL ELEVATION (METERS) 197.82 ELLIPSOIDAL HEIGHT (METERS) -26.70		NAD-83 (CORS 96) STATE PLANE COORDINATES NORTH CENTRAL ZONE (U.S. SURVEY FEET) NORTHING (Y) 6927997.0057 EASTING (X) 2458303.8298		
NGVD-29 ELEV: 736.61' (FEMA) (U.S. SURVEY FEET)		NAVD-88 ELEVATION: 736.61' (U.S. SURVEY FEET)		

NOTE:

4" DIAMETER DOMED BRONZE DISK SET ON A DOUBLE STORM DRAIN INLET ON THE EAST SIDE OF N. DUNCANVILLE ROAD APPROXIMATELY 534' NORTH OF THE CENTERLINE OF W. CAMP WISDOM ROAD.

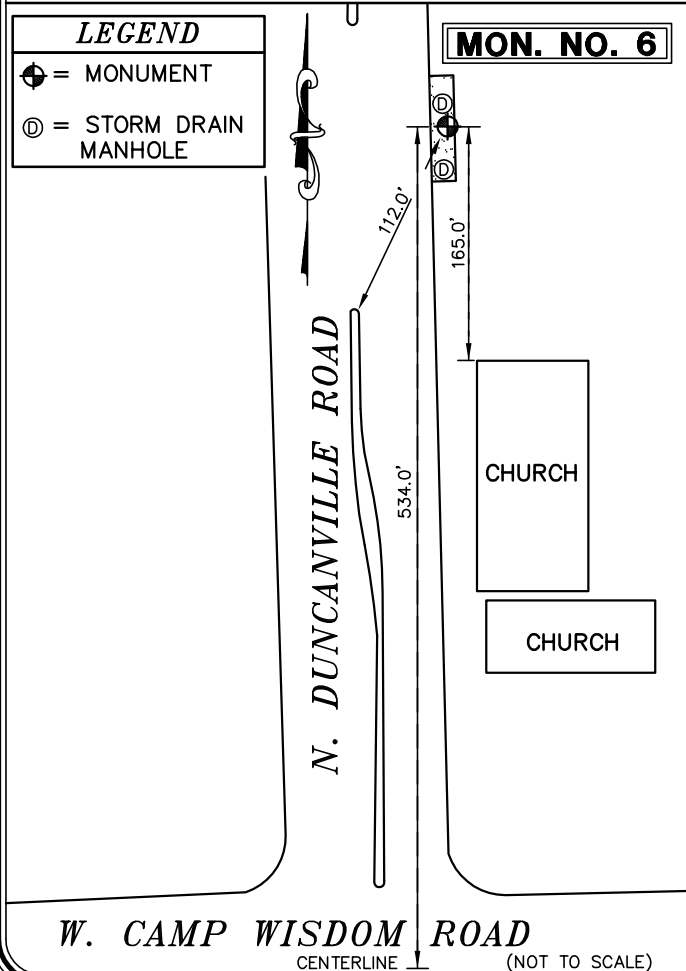
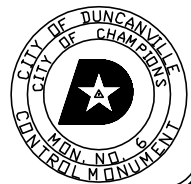


PHOTO TAKEN FROM NORTH OF THE MONUMENT LOOKING SOUTH TOWARD W. CAMP WISDOM ROAD



CITY OF DUNCANVILLE GPS CONTROL SHEET

Established By:
W The Wallace Group, Inc.
(214) 747-3733

MONUMENT NAME: MON. NO. 7	DATE ESTABLISHED: DECEMBER 2002	COUNTY: DALLAS	STATE: TEXAS	MAPSCO PAGE NO. 62-Z
NAD-83 (CORS 96) GEODETIC POSITION LATITUDE N 032° 39' 40.23889" LONGITUDE W 096° 53' 29.46670"		NAD-83 (CORS 96) STATE PLANE COORDINATES NORTH CENTRAL ZONE (METERS) NORTHING (Y) 2111436.4389 EASTING (X) 750868.0406		
ELLIPSOIDAL ELEVATION (METERS) 188.40 ELLIPSOIDAL HEIGHT (METERS) -26.66		NAD-83 (CORS 96) STATE PLANE COORDINATES NORTH CENTRAL ZONE (U.S. SURVEY FEET) NORTHING (Y) 6927271.0501 EASTING (X) 2463472.8965		
NGVD-29 ELEV: 705.57' (FEMA) (U.S. SURVEY FEET)		NAVD-88 ELEVATION: 705.57' (U.S. SURVEY FEET)		

NOTE:
4" DIAMETER DOMED BRONZE DISK SET IN THE SOUTHWEST CORNER OF A STORM DRAIN INLET ON THE WEST SIDE OF N. COCKRELL HILL ROAD APPROXIMATELY 104' NORTH OF THE CENTERLINE OF THE WESTBOUND ACCESS ROAD OF INTERSTATE HIGHWAY NO. 20 AND APPROXIMATELY 294' SOUTH OF THE CENTERLINE OF CAMP WISDOM ROAD.

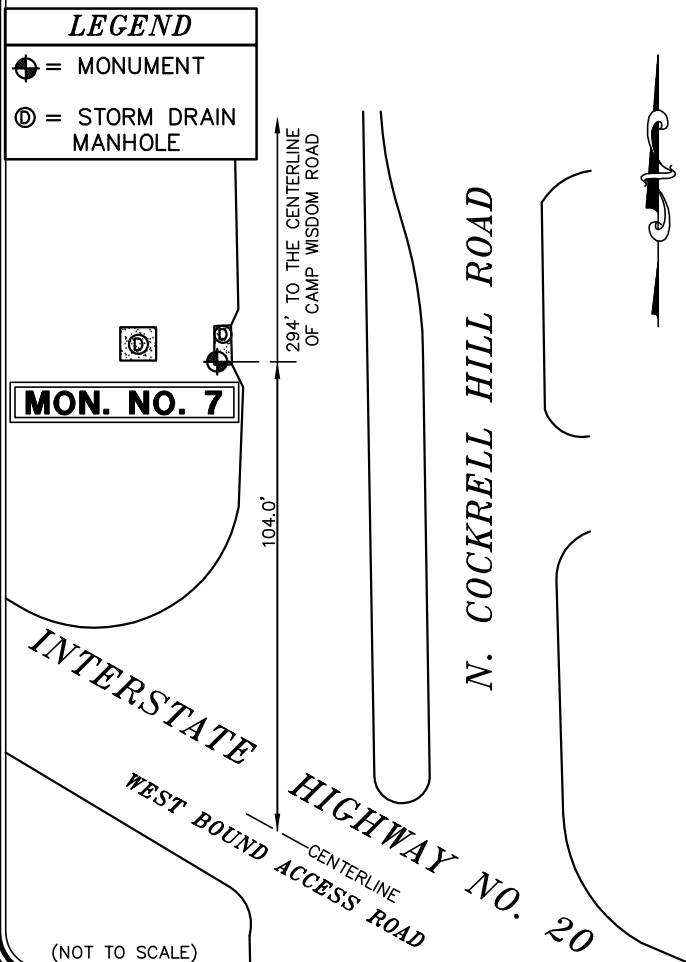


PHOTO TAKEN FROM NORTH OF THE MONUMENT LOOKING SOUTH TOWARD INTERSTATE HIGHWAY NO. 20 WESTBOUND ACCESS ROAD



CITY OF DUNCANVILLE

GPS CONTROL SHEET

Established By:
 The Wallace Group, Inc.
 (214) 747-3733

MONUMENT NAME: MON. NO. 8	DATE ESTABLISHED: DECEMBER 2002	COUNTY: DALLAS	STATE: TEXAS	MAPSCO PAGE NO. 72-D
NAD-83 (CORS 96) GEODETIC POSITION LATITUDE N 032° 38' 56.70690" LONGITUDE W 096° 53' 28.77625"		NAD-83 (CORS 96) STATE PLANE COORDINATES NORTH CENTRAL ZONE (METERS) NORTHING (Y) 2110096.0033 EASTING (X) 750906.5599		
ELLIPSOIDAL ELEVATION (METERS) 186.96 ELLIPSOIDAL HEIGHT (METERS) -26.65		NAD-83 (CORS 96) STATE PLANE COORDINATES NORTH CENTRAL ZONE (U.S. SURVEY FEET) NORTHING (Y) 6922873.3041 EASTING (X) 2463599.2719		
NGVD-29 ELEV: 700.82' (FEMA) (U.S. SURVEY FEET)		NAVD-88 ELEVATION: 700.83' (U.S. SURVEY FEET)		

NOTE:
 4" DIAMETER DOMED BRONZE DISK IN A 12" DIAMETER CONCRETE MONUMENT SET IN THE GRASS MEDIAN OF S. COCKRELL HILL ROAD, APPROXIMATELY 593' NORTH OF THE CENTERLINE OF E. WHEATLAND ROAD.

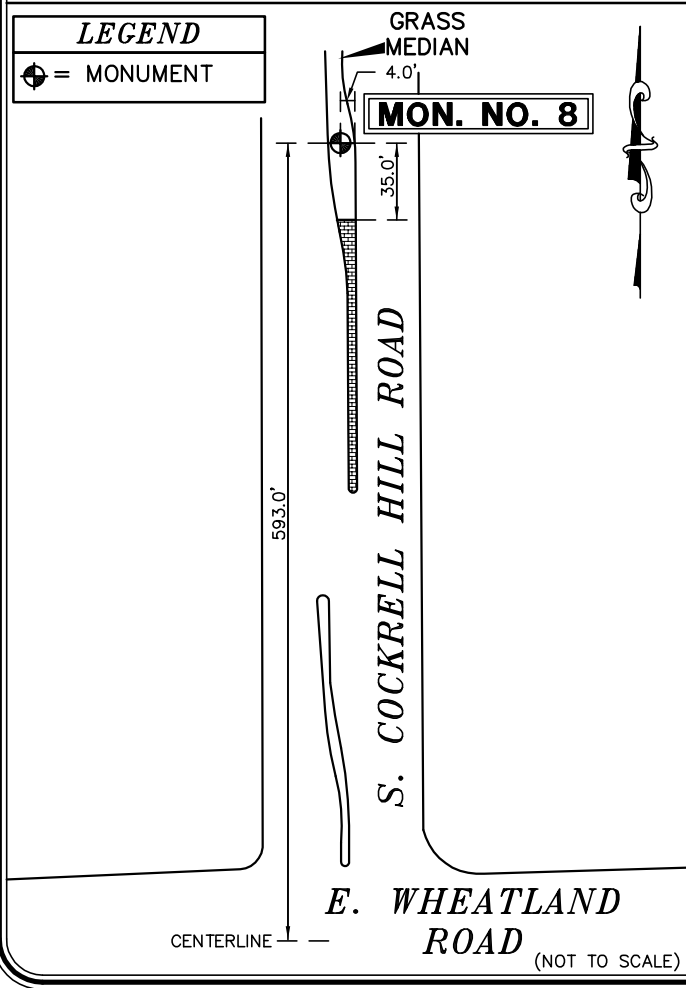


PHOTO TAKEN FROM NORTH OF THE MONUMENT LOOKING SOUTH TOWARD E. WHEATLAND ROAD



CITY OF DUNCANVILLE

GPS CONTROL SHEET

Established By:
W The Wallace Group, Inc.
 (214) 747-3733

MONUMENT NAME: MON. NO. 9	DATE ESTABLISHED: DECEMBER 2002	COUNTY: DALLAS	STATE: TEXAS	MAPSCO PAGE NO. 72-C
NAD-83 (CORS 96) GEODETIC POSITION LATITUDE N 032° 38' 50.82988" LONGITUDE W 096° 54' 16.07701"		NAD-83 (CORS 96) STATE PLANE COORDINATES NORTH CENTRAL ZONE (METERS) NORTHING (Y) 2109896.2040 EASTING (X) 749676.8506		
ELLIPSOIDAL ELEVATION (METERS) 192.05 ELLIPSOIDAL HEIGHT (METERS) -26.69		NAD - 83 (CORS 96) STATE PLANE COORDINATES NORTH CENTRAL ZONE (U.S. SURVEY FEET) NORTHING (Y) 6922217.7958 EASTING (X) 2459564.8008		
NGVD-29 ELEV: 717.64' (FEMA) (U.S. SURVEY FEET)		NAVD-88 ELEVATION: 717.65' (U.S. SURVEY FEET)		

NOTE:

4" DIAMETER DOMED BRONZE DISK IN A 12" DIAMETER CONCRETE MONUMENT SET IN THE MEDIAN OF THE SOUTH PARKING LOT FOR ARMSTRONG PARK BETWEEN THE POLICE STATION AND CRANKSHAFT DRIVE.

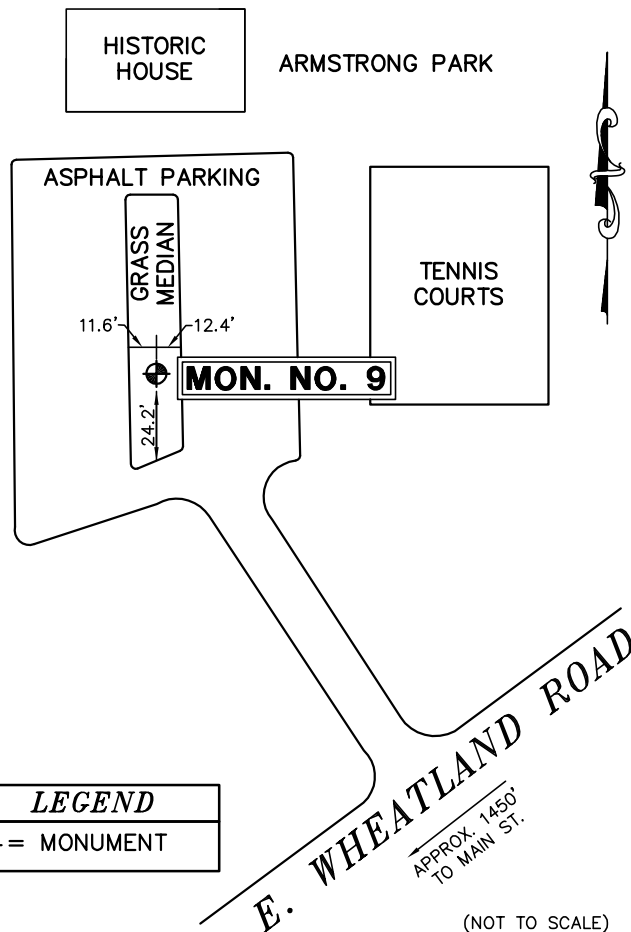
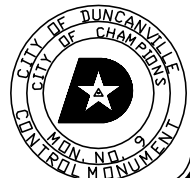


PHOTO TAKEN FROM SOUTH OF THE MEDIAN LOOKING NORTH



(NOT TO SCALE)

CITY OF DUNCANVILLE

GPS CONTROL SHEET

Established By:
 The Wallace Group, Inc.
 (214) 747-3733

MONUMENT NAME: MON. NO. 10	DATE ESTABLISHED: DECEMBER 2002	COUNTY: DALLAS	STATE: TEXAS	MAPSCO PAGE NO. 71B-D
NAD-83 (CORS 96) GEODETIC POSITION LATITUDE N 032° 38' 50.67327" LONGITUDE W 096° 55' 44.37667"		NAD-83 (CORS 96) STATE PLANE COORDINATES NORTH CENTRAL ZONE (METERS) NORTHING (Y) 2109856.7031 EASTING (X) 747376.1568		
ELLIPSOIDAL ELEVATION (METERS) 186.76 ELLIPSOIDAL HEIGHT (METERS) -26.75		NAD-83 (CORS 96) STATE PLANE COORDINATES NORTH CENTRAL ZONE (U.S. SURVEY FEET) NORTHING (Y) 6922088.1999 EASTING (X) 2452016.6078		
NGVD-29 ELEV: 700.49' (U.S. SURVEY FEET) (FEMA)		NAVD-88 ELEVATION: 700.50' (U.S. SURVEY FEET)		

NOTE:
 4" DIAMETER DOMED BRONZE DISK IN A 12" DIAMETER CONCRETE MONUMENT SET APPROXIMATELY 37' WEST OF THE CENTERLINE OF KENSINGTON DRIVE IN GRASS MEDIAN OF W. WHEATLAND ROAD.

LEGEND
 = MONUMENT

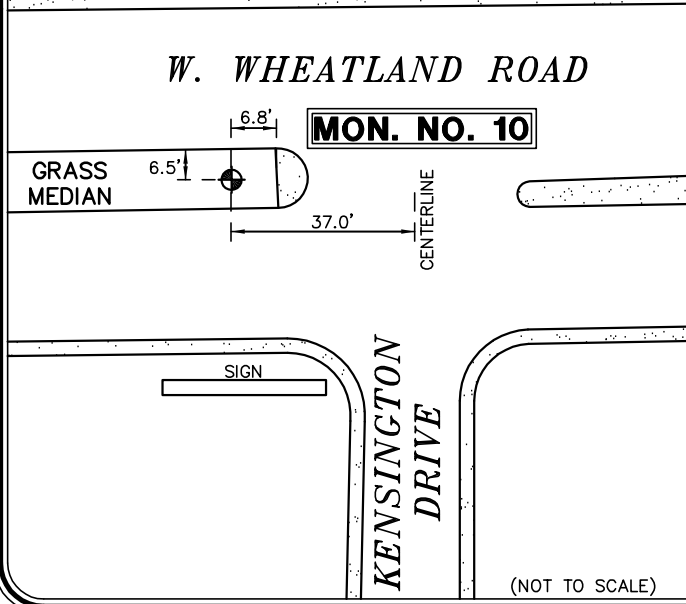
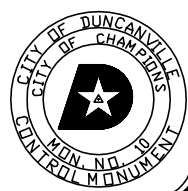


PHOTO TAKEN FROM WEST OF THE MONUMENT LOOKING EAST ALONG W. WHEATLAND ROAD



CITY OF DUNCANVILLE

GPS CONTROL SHEET

Established By:
 The Wallace Group, Inc.
 (214) 747-3733

MONUMENT NAME: MON. NO. 11	DATE ESTABLISHED: DECEMBER 2002	COUNTY: DALLAS	STATE: TEXAS	MAPSCO PAGE NO. 71B-C
NAD-83 (CORS 96) GEODETIC POSITION LATITUDE N 032° 38' 50.81868" LONGITUDE W 096° 56' 34.22551"		NAD-83 (CORS 96) STATE PLANE COORDINATES NORTH CENTRAL ZONE (METERS) NORTHING (Y) 2109841.8419 EASTING (X) 746077.2079		
ELLIPSOIDAL ELEVATION (METERS) 198.32 ELLIPSOIDAL HEIGHT (METERS) -26.79		NAD-83 (CORS 96) STATE PLANE COORDINATES NORTH CENTRAL ZONE (U.S. SURVEY FEET) NORTHING (Y) 6922039.4428 EASTING (X) 2447754.9728		
NGVD-29 ELE: 738.52' (FEMA) (U.S. SURVEY FEET)		NAVD-88 ELEVATION: 738.53' (U.S. SURVEY FEET)		

NOTE:
 4" DIAMETER DOMED BRONZE DISK SET IN THE NORTHWEST CORNER OF A STORM DRAIN INLET APPROXIMATELY 88.5' NORTH OF THE CENTERLINE OF W. WHEATLAND ROAD ON THE EAST SIDE OF THE MEDIAN IN S. CLARK ROAD.

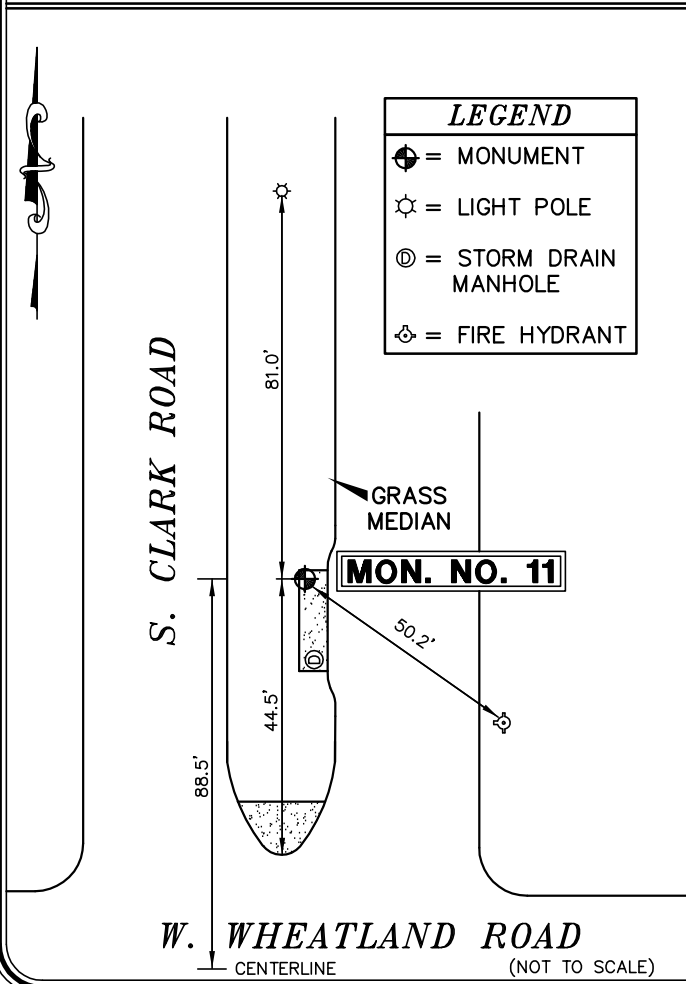
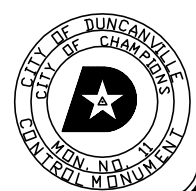


PHOTO TAKEN FROM NORTH OF THE MONUMENT LOOKING SOUTH TOWARD W. WHEATLAND ROAD



CITY OF DUNCANVILLE

GPS CONTROL SHEET

Established By:
W The Wallace Group, Inc.
 (214) 747-3733

MONUMENT NAME: MON. NO. 12	DATE ESTABLISHED: DECEMBER 2002	COUNTY: DALLAS	STATE: TEXAS	MAPSCO PAGE NO. 71B-L
NAD-83 (CORS 96) GEODETIC POSITION LATITUDE N 032° 37' 55.44218" LONGITUDE W 096° 56' 36.15327"		NAD-83 (CORS 96) STATE PLANE COORDINATES NORTH CENTRAL ZONE (METERS) NORTHING (Y) 2108135.5841 EASTING (X) 746052.2503		
ELLIPSOIDAL ELEVATION (METERS) 199.19 ELLIPSOIDAL HEIGHT (METERS) -26.79		NAD-83 (CORS 96) STATE PLANE COORDINATES NORTH CENTRAL ZONE (U.S. SURVEY FEET) NORTHING (Y) 6916441.4955 EASTING (X) 2447673.0913		
NGVD-29 ELEV: 741.35' (FEMA) (U.S. SURVEY FEET)		NAVD-88 ELEVATION: 741.37' (U.S. SURVEY FEET)		

NOTE:
 4" DIAMETER DOMED BRONZE DISK SET IN THE SOUTHWEST CORNER OF THE SECOND STORM DRAIN INLET ON THE WEST SIDE OF THE SOUTHBOUND LANES OF S. CLARK ROAD APPROXIMATELY 224' SOUTH OF THE CENTERLINE OF W. DANIELDALE ROAD.

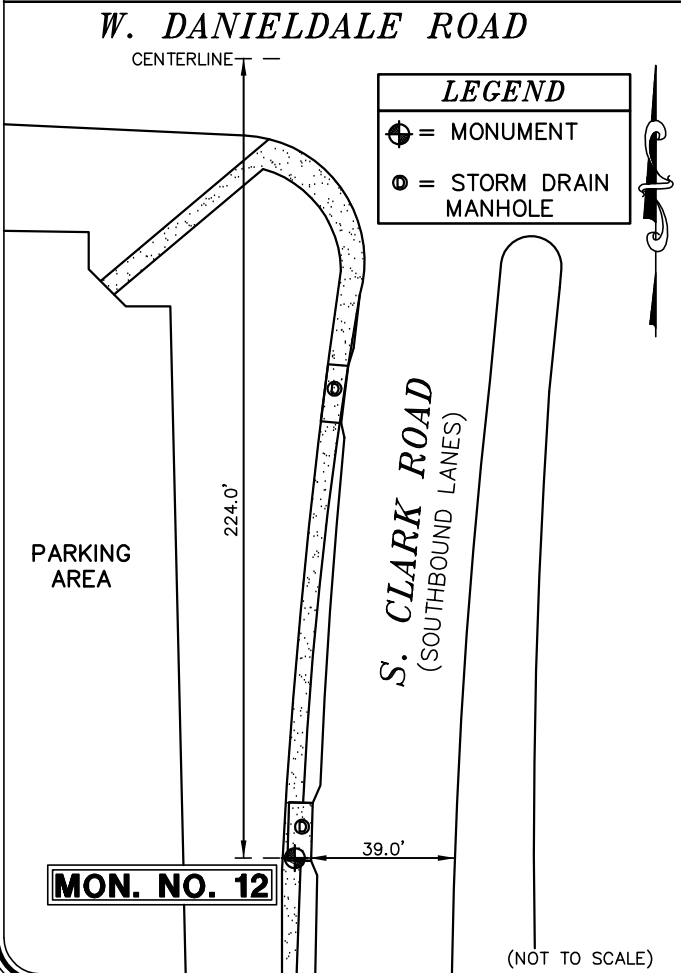


PHOTO TAKEN FROM SOUTH OF THE MONUMENT LOOKING NORTH TOWARD W. DANIELDALE ROAD



CITY OF DUNCANVILLE

GPS CONTROL SHEET

Established By:
W The Wallace Group, Inc.
 (214) 747-3733

MONUMENT NAME: MON. NO. 13	DATE ESTABLISHED: DECEMBER 2002	COUNTY: DALLAS	STATE: TEXAS	MAPSCO PAGE NO. 72-J
NAD-83 (CORS 96) GEODETIC POSITION LATITUDE N 032° 37' 56.76948" LONGITUDE W 096° 55' 31.50693"		NAD-83 (CORS 96) STATE PLANE COORDINATES NORTH CENTRAL ZONE (METERS) NORTHING (Y) 2108201.5720 EASTING (X) 747736.3804		
ELLIPSOIDAL ELEVATION (METERS) 176.47 ELLIPSOIDAL HEIGHT (METERS) -26.74		NAD-83 (CORS 96) STATE PLANE COORDINATES NORTH CENTRAL ZONE (U.S. SURVEY FEET) NORTHING (Y) 6916657.9909 EASTING (X) 2453198.4415		
NGVD-29 ELEV: 666.68' (FEMA) (U.S. SURVEY FEET)		NAVD-88 ELEVATION: 666.70' (U.S. SURVEY FEET)		

NOTE:
 4" DIAMETER DOMED BRONZE DISK SET IN THE SOUTHWEST CORNER OF A STORM DRAIN INLET ON THE WEST SIDE OF S. SANTA FE TRAIL APPROXIMATELY 97' SOUTH OF THE CENTERLINE OF W. DANIELDALE ROAD.

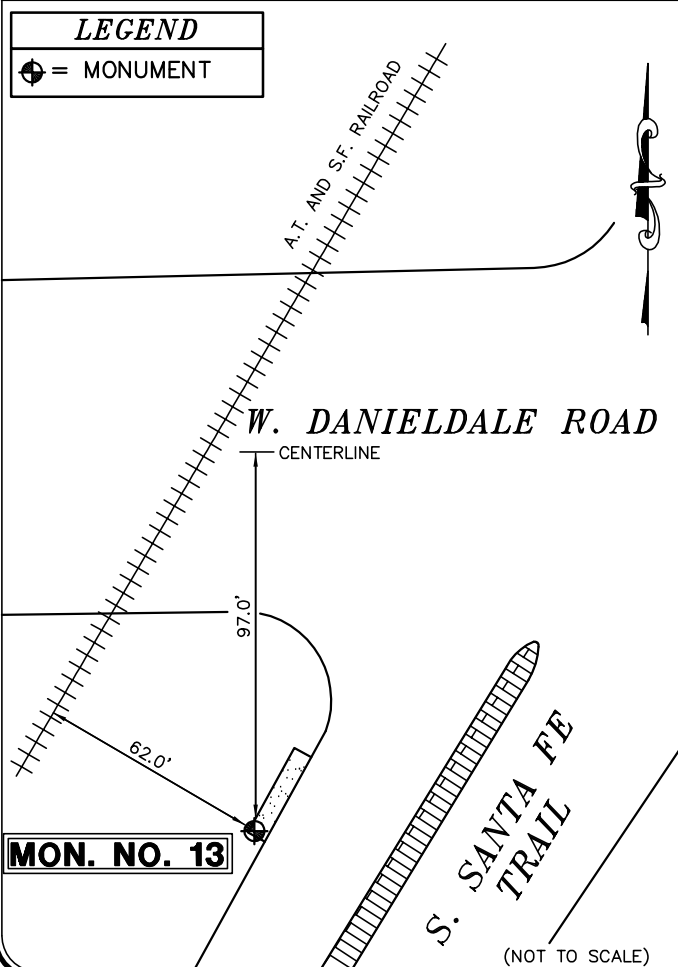
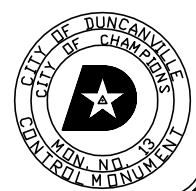


PHOTO TAKEN FROM SOUTHWEST OF THE MONUMENT LOOKING NORTHEAST TOWARD W. DANIELDALE ROAD



CITY OF DUNCANVILLE

GPS CONTROL SHEET

Established By:
W The Wallace Group, Inc.
 (214) 747-3733

MONUMENT NAME: MON. NO. 14	DATE ESTABLISHED: DECEMBER 2002	COUNTY: DALLAS	STATE: TEXAS	MAPSCO PAGE NO. 72-L
NAD-83 (CORS 96) GEODETIC POSITION LATITUDE N 032° 37' 54.09558" LONGITUDE W 096° 54' 19.50814"		NAD-83 (CORS 96) STATE PLANE COORDINATES NORTH CENTRAL ZONE (METERS) NORTHING (Y) 2108147.5244 EASTING (X) 749613.9721		
ELLIPSOIDAL ELEVATION (METERS) 167.58 ELLIPSOIDAL HEIGHT (METERS) -26.69		NAD-83 (CORS 96) STATE PLANE COORDINATES NORTH CENTRAL ZONE (U.S. SURVEY FEET) NORTHING (Y) 6916480.6695 EASTING (X) 2459358.5067		
NGVD-29 ELEV: 637.34' (FEMA) (U.S. SURVEY FEET)		NAVD-88 ELEVATION: 637.35' (U.S. SURVEY FEET)		

NOTE:

4" DIAMETER DOMED BRONZE DISK IN A 12" DIAMETER CONCRETE MONUMENT SET IN THE NORTHEAST CORNER OF THE INTERSECTION OF BOB LEE BOULEVARD AND SHADY TRAIL BETWEEN THE EAST CURB LINE OF BOB LEE BOULEVARD AND THE WEST CURB LINE OF A PARKING AREA NORTH OF THE CITY OF DUNCANVILLE MUNICIPAL SERVICE CENTER BUILDING.

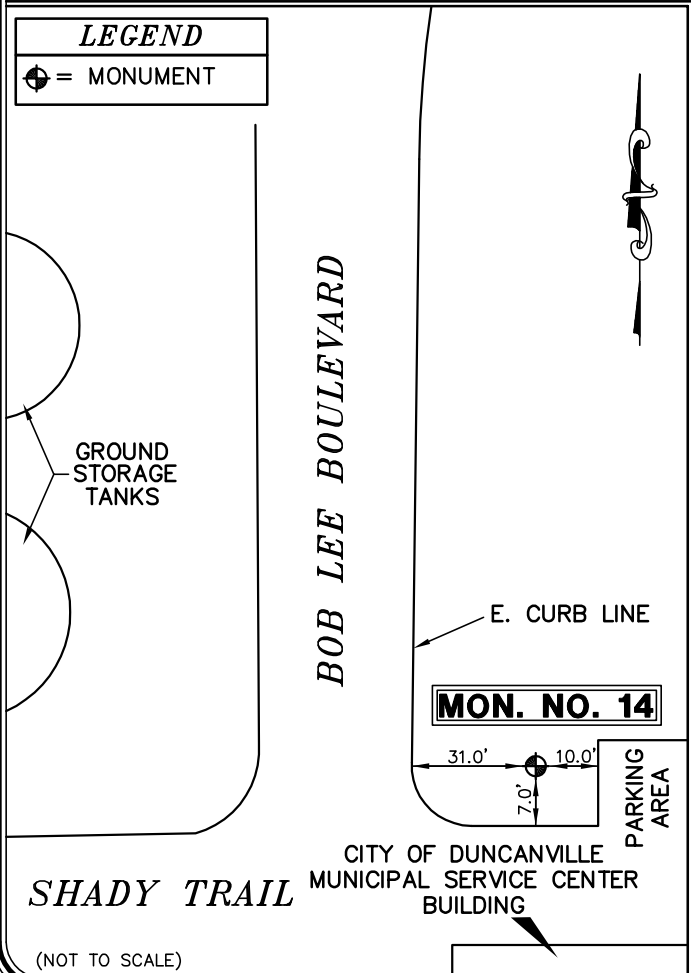
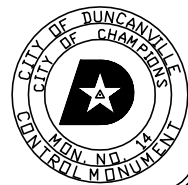


PHOTO TAKEN FROM NORTH OF THE MONUMENT LOOKING SOUTH TOWARD THE CITY OF DUNCANVILLE MUNICIPAL SERVICE CENTER




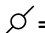
CITY OF DUNCANVILLE

GPS CONTROL SHEET

Established By:
 The Wallace Group, Inc.
 (214) 747-3733

MONUMENT NAME: MON. NO. 15	DATE ESTABLISHED: DECEMBER 2002	COUNTY: DALLAS	STATE: TEXAS	MAPSCO PAGE NO. 72-M
NAD-83 (CORS 96) GEODETIC POSITION LATITUDE N 032° 37' 59.80328" LONGITUDE W 096° 53' 29.18624"		NAD-83 (CORS 96) STATE PLANE COORDINATES NORTH CENTRAL ZONE (METERS) NORTHING (Y) 2108343.3063 EASTING (X) 750922.7139		
ELLIPSOIDAL ELEVATION (METERS) 162.75 ELLIPSOIDAL HEIGHT (METERS) -26.65		NAD-83 (CORS 96) STATE PLANE COORDINATES NORTH CENTRAL ZONE (U.S. SURVEY FEET) NORTHING (Y) 6917122.9975 EASTING (X) 2463652.2704		
NGVD-29 ELEV: 621.41' (FEMA) (U.S. SURVEY FEET)		NAVD-88 ELEVATION: 621.41' (U.S. SURVEY FEET)		

NOTE:
 4" DIAMETER DOMED BRONZE DISK SET IN THE NORTHWEST CORNER OF A STORM DRAIN INLET ON THE WEST SIDE OF S. COCKRELL HILL ROAD APPROXIMATELY 90' NORTH OF THE CENTERLINE OF E. DANIELDALE ROAD.

<i>LEGEND</i>
 = MONUMENT
 = POWER POLE

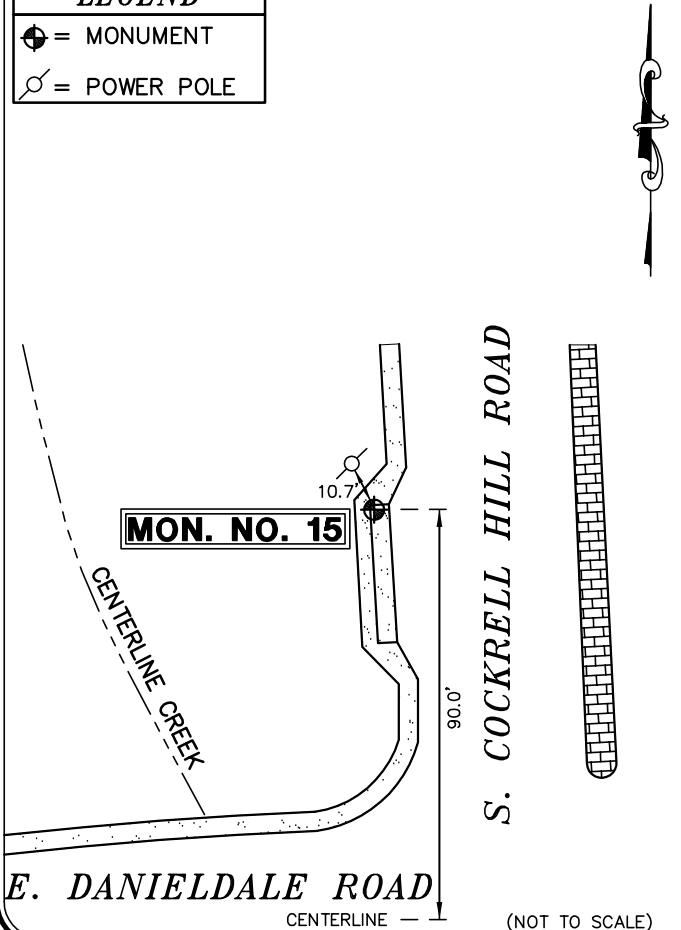


PHOTO TAKEN FROM NORTH OF THE MONUMENT LOOKING SOUTH TOWARD E. DANIELDALE ROAD



CITY OF DUNCANVILLE

GPS CONTROL SHEET

Established By:
W The Wallace Group, Inc.
 (214) 747-3733

MONUMENT NAME: MON. NO. 16	DATE ESTABLISHED: DECEMBER 2002	COUNTY: DALLAS	STATE: TEXAS	MAPSCO PAGE NO. 72-V
NAD-83 (CORS 96) GEODETIC POSITION LATITUDE N 032° 37' 07.97931" LONGITUDE W 096° 53' 30.47453"		NAD-83 (CORS 96) STATE PLANE COORDINATES NORTH CENTRAL ZONE (METERS) NORTHING (Y) 2106746.7042 EASTING (X) 750913.5759		
ELLIPSOIDAL ELEVATION (METERS) 166.46 ELLIPSOIDAL HEIGHT (METERS) -26.65		NAD-83 (CORS 96) STATE PLANE COORDINATES NORTH CENTRAL ZONE (U.S. SURVEY FEET) NORTHING (Y) 6911884.8121 EASTING (X) 2463622.2903		
NGVD-29 ELEV: 633.56' (FEMA) (U.S. SURVEY FEET)		NAVD-88 ELEVATION: 633.57' (U.S. SURVEY FEET)		

NOTE:
 4" DIAMETER DOMED BRONZE DISK SET IN THE NORTHWEST CORNER OF A STORM DRAIN INLET ON THE NORTH SIDE OF E. WINTERGREEN ROAD APPROXIMATELY 155' WEST OF THE CENTERLINE OF S. COCKRELL HILL ROAD.

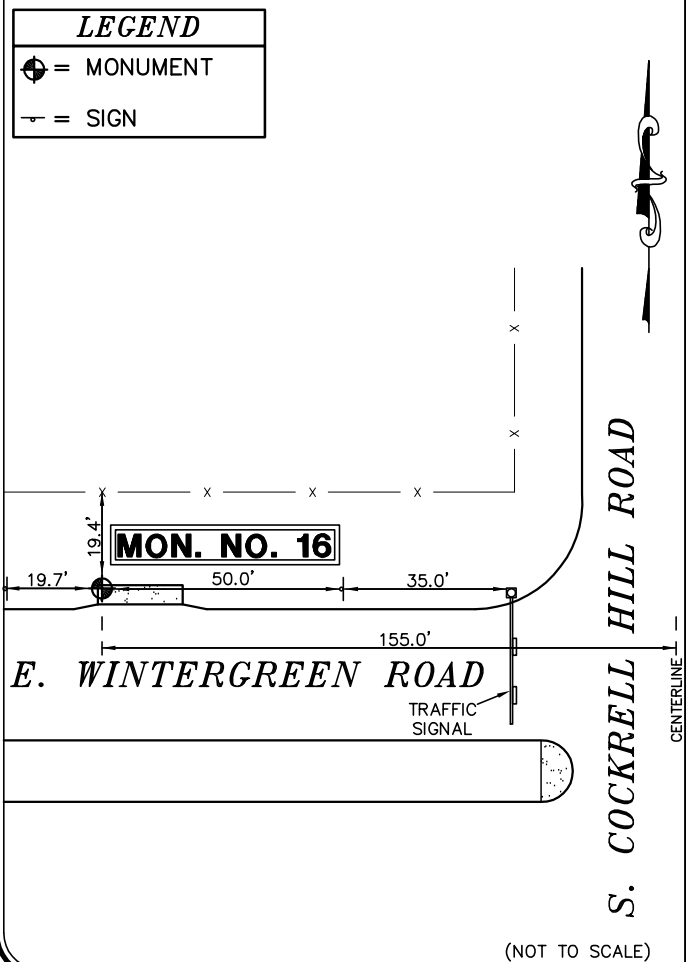
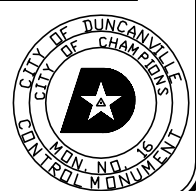


PHOTO TAKEN FROM NORTH SIDE
 OF E. WINTERGREEN ROAD
 LOOKING EAST TOWARD S.
 COCKRELL HILL ROAD



CITY OF DUNCANVILLE

GPS CONTROL SHEET

Established By:
W The Wallace Group, Inc.
 (214) 747-3733

MONUMENT NAME: MON. NO. 17	DATE ESTABLISHED: DECEMBER 2002	COUNTY: DALLAS	STATE: TEXAS	MAPSCO PAGE NO. 72-Q
NAD-83 (CORS 96) GEODETIC POSITION LATITUDE N 032° 37' 17.69853" LONGITUDE W 096° 54' 31.11158"		NAD-83 (CORS 96) STATE PLANE COORDINATES NORTH CENTRAL ZONE (METERS) NORTHING (Y) 2107021.9702 EASTING (X) 749328.5574		
ELLIPSOIDAL ELEVATION (METERS) 182.13 ELLIPSOIDAL HEIGHT (METERS) -26.70		NAD-83 (CORS 96) STATE PLANE COORDINATES NORTH CENTRAL ZONE (U.S. SURVEY FEET) NORTHING (Y) 6912787.9138 EASTING (X) 2458422.1087		
NGVD-29 ELEV: 685.10' (FEMA) (U.S. SURVEY FEET)		NAVD-88 ELEVATION: 685.12' (U.S. SURVEY FEET)		

NOTE:
 4" DIAMETER DOMED BRONZE DISK IN A 12" DIAMETER CONCRETE MONUMENT SET IN THE GRASS MEDIAN OF S. MAIN STREET APPROXIMATELY 193' NORTH OF THE CENTERLINE OF MEADOWCREEK DRIVE.

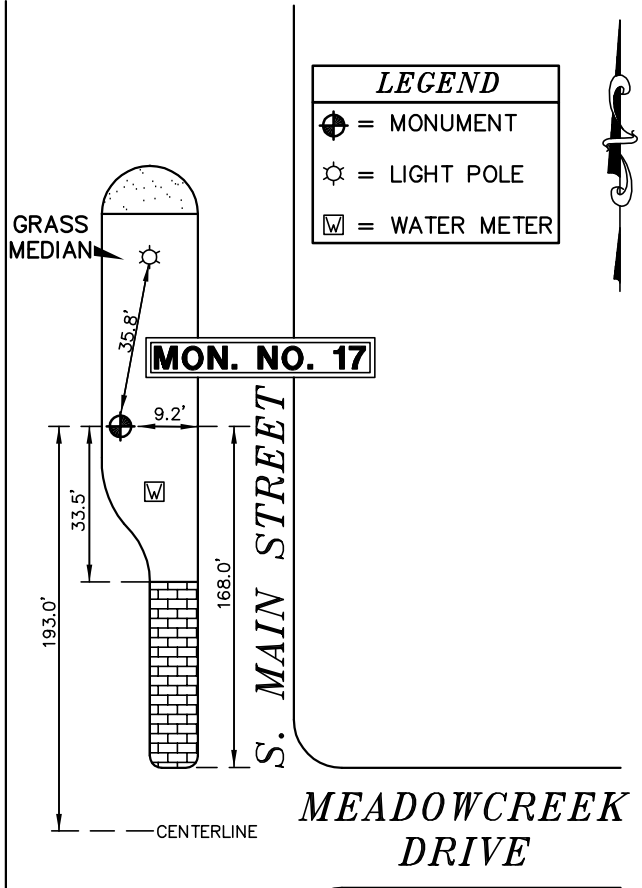
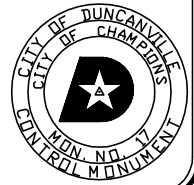


PHOTO TAKEN FROM NORTH OF THE MONUMENT LOOKING SOUTH TOWARD THE INTERSECTION OF MEADOWCREEK DRIVE



(NOT TO SCALE)

CITY OF DUNCANVILLE

GPS CONTROL SHEET

Established By:
W The Wallace Group, Inc.
 (214) 747-3733

MONUMENT NAME: MON. NO. 18	DATE ESTABLISHED: DECEMBER 2002	COUNTY: DALLAS	STATE: TEXAS	MAPSCO PAGE NO. 72-N
NAD-83 (CORS 96) GEODETIC POSITION LATITUDE N 032° 37' 29.92772" LONGITUDE W 096° 55' 34.07997"		NAD-83 (CORS 96) STATE PLANE COORDINATES NORTH CENTRAL ZONE (METERS) NORTHING (Y) 2107373.8836 EASTING (X) 747681.7110		
ELLIPSOIDAL ELEVATION (METERS) 176.73 ELLIPSOIDAL HEIGHT (METERS) -26.74		NAD-83 (CORS 96) STATE PLANE COORDINATES NORTH CENTRAL ZONE (U.S. SURVEY FEET) NORTHING (Y) 6913942.4831 EASTING (X) 2453019.0802		
NGVD-29 ELEV: 667.54' (FEMA) (U.S. SURVEY FEET)		NAVD-88 ELEVATION: 667.56' (U.S. SURVEY FEET)		

NOTE:
 4" DIAMETER DOMED BRONZE DISK SET ON THE NORTHEAST CORNER OF A STORM DRAIN INLET APPROXIMATELY 187' NORTHWEST OF THE CENTERLINE OF CEDAR HILL ROAD AND APPROXIMATELY 8' NORTHEAST OF THE NORTHEAST EDGE OF ASPHALT OF JOE WILSON ROAD.

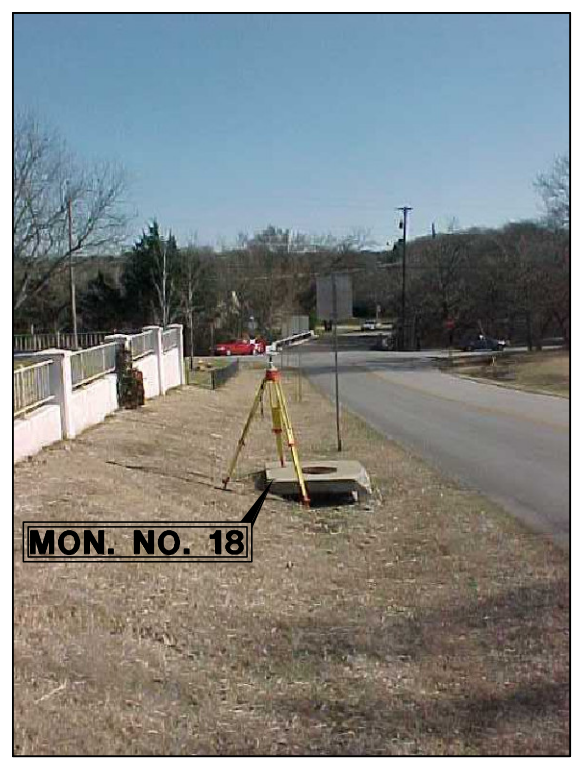
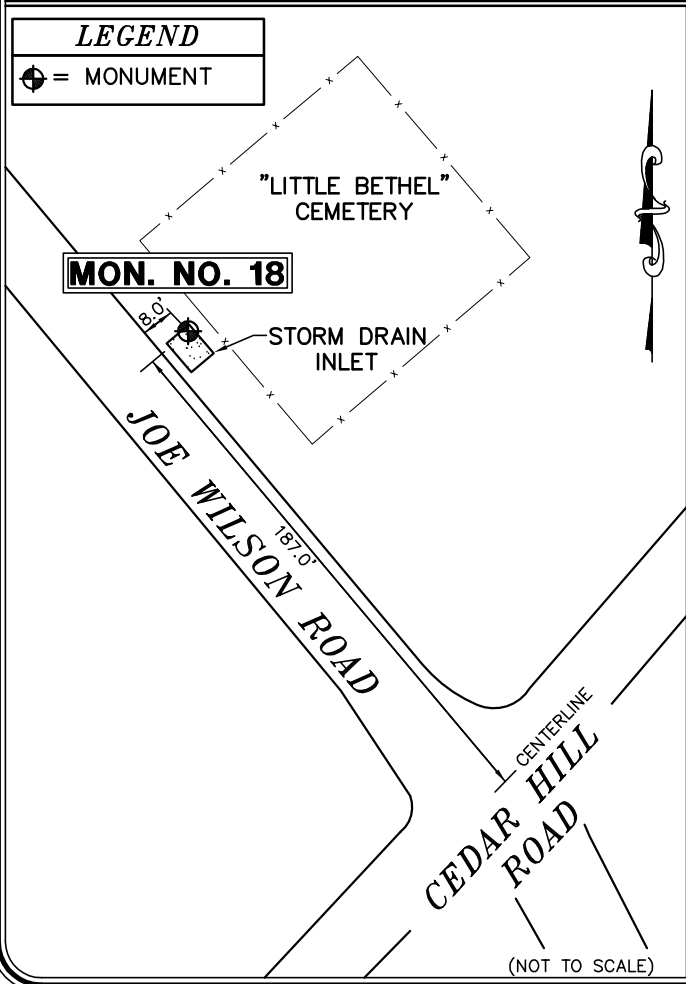
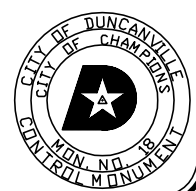


PHOTO TAKEN FROM NORTHWEST OF THE MONUMENT LOOKING SOUTHEAST TOWARD CEDAR HILL ROAD





Duncanville
City of Champions

City of Duncanville
Public Works Administration
203 E. Wheatland Road
Duncanville, Texas 75116
972-780-5015

CITY OF DUNCANVILLE

GPS CONTROL SHEET

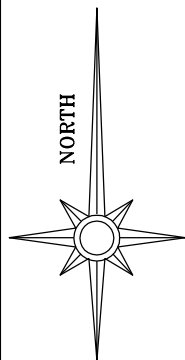
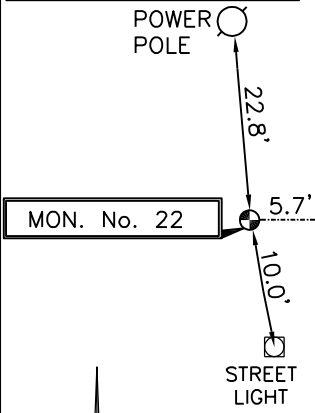
ESTABLISHED BY: BRITTAIN & CRAWFORD, LLC.
 LAND SURVEYING & TOPOGRAPHIC MAPPING PH. 817-926-0211

MONUMENT NAME: MON. No. 22	DATE ESTABLISHED: NOVEMBER, 2008	COUNTY: DALLAS	STATE: TEXAS	MAPSCO PAGE NO. 62-Y
NAD-83 (CORS 96) GEODETIC POSITION LATITUDE N 032° 39' 33.15390" LONGITUDE W 096° 54' 26.33520"		NAD-83 (CORS 96) STATE PLANE COORDINATES NORTH CENTRAL ZONE (METERS) NORTHING (Y) 2111195.658 EASTING (X) 749389.797		
ELLIPSOIDAL ELEVATION (METERS) 198.064 ELLIPSODIAL HEIGHT (METERS) -26.81		NAD-83 (CORS 96) STATE PLANE COORDINATES NORTH CENTRAL ZONE (U.S. SURVEY FEET) NORTHING (Y) 6926481.08795 EASTING (X) 2458623.02566		
NGVD-29 ELEV: 737.77' (FEMA) (U.S. SURVEY FEET)		NAVD-88 ELEV: 737.761' (U.S. SURVEY FEET)		

DESCRIPTION: 3 1/4" ALUMINUM DISK SET IN CONCRETE ON THE WEST SIDE OF MAIN STREET AT THE PROJECTION OF THE CENTERLINE E. FAIN STREET. THE MONUMENT IS 5.7 FEET WEST OF THE WEST CURBLINE OF MAIN STREET.

LEGEND:

- = MONUMENT
- = FIRE HYDRANT



NOT TO SCALE

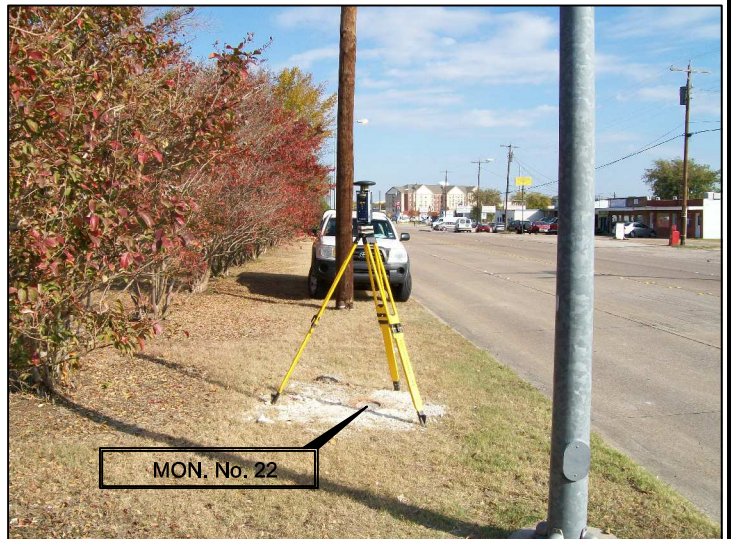
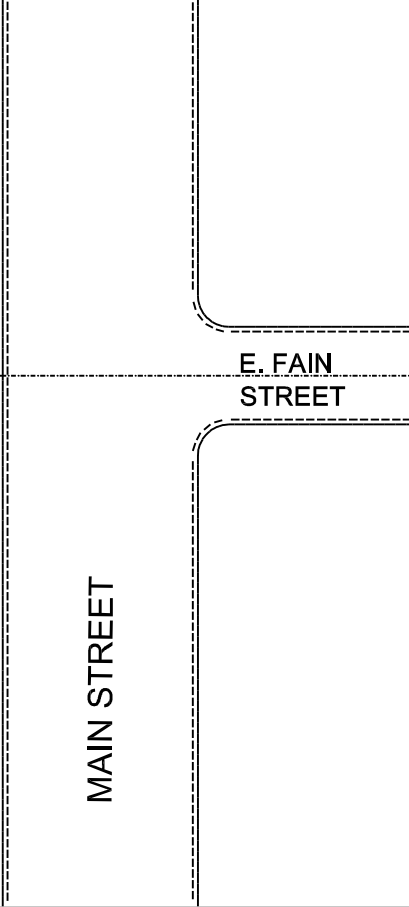


PHOTO TAKEN ON THE WEST SIDE OF MAIN STREET FROM THE SOUTH TO NORTH LOOKING TOWARDS CAMP WISDOM ROAD.



CITY OF DUNCANVILLE

GPS CONTROL SHEET

ESTABLISHED BY: BRITAIN & CRAWFORD, LLC.
 LAND SURVEYING & TOPOGRAPHIC MAPPING PH. 817-926-0211

MONUMENT NAME: MON. No. 21	DATE ESTABLISHED: NOVEMBER, 2008	COUNTY: DALLAS	STATE: TEXAS	MAPSCO PAGE NO. 72-C
NAD-83 (CORS 96) GEODETIC POSITION LATITUDE N 032° 39' 09.23019" LONGITUDE W 096° 54' 30.93962"		NAD-83 (CORS 96) STATE PLANE COORDINATES NORTH CENTRAL ZONE (METERS) NORTHING (Y) 2110457.029 EASTING (X) 749281.001		
ELLIPSOIDAL ELEVATION (METERS) 193.687 ELLIPSODIAL HEIGHT (METERS) -26.81		NAD-83 (CORS 96) STATE PLANE COORDINATES NORTH CENTRAL ZONE (U.S. SURVEY FEET) NORTHING (Y) 6924057.76930 EASTING (X) 2458266.08411		
NGVD-29 ELEV: 723.29' (FEMA) (U.S. SURVEY FEET)		NAVD-88 ELEV: 723.407' (U.S. SURVEY FEET)		

DESCRIPTION: 3 1/4" ALUMINUM DISK SET IN CONCRETE ON THE WEST SIDE OF MAIN STREET, AND APPROXIMATELY 34 FEET SOUTH OF THE CENTERLINE INTERSECTION OF MAIN STREET AND E. CHERRY STREET AND APPROXIMATELY 350 FEET NORTH OF THE CENTERLINE OF CENTER STREET. 5.1 FEET WEST OF THE SOUTHEAST CORNER OF A CURB INLET.

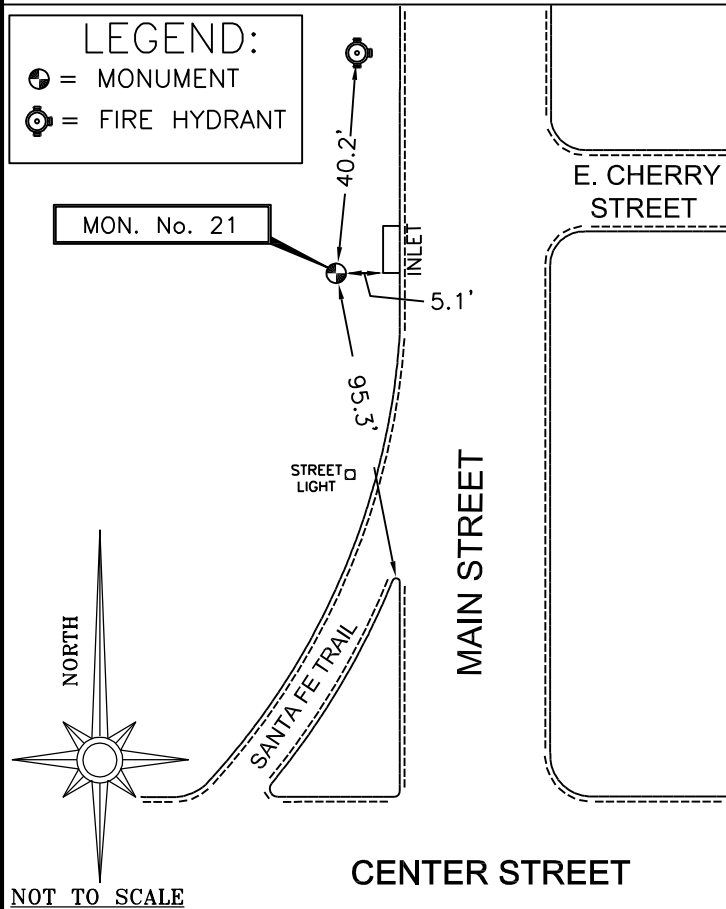


PHOTO TAKEN ON THE WEST SIDE OF MAIN STREET FROM THE NORTH TO SOUTH LOOKING TOWARDS CENTER STREET.



NOT TO SCALE

CITY OF DUNCANVILLE

GPS CONTROL SHEET

ESTABLISHED BY: BRITAIN & CRAWFORD, LLC.
 LAND SURVEYING & TOPOGRAPHIC MAPPING PH. 817-926-0211

MONUMENT NAME: MON. No. 20	DATE ESTABLISHED: NOVEMBER, 2008	COUNTY: DALLAS	STATE: TEXAS	MAPSCO PAGE NO. 72-C
NAD-83 (CORS 96) GEODETIC POSITION LATITUDE N 032° 38' 58.98090" LONGITUDE W 096° 54' 30.88903"		NAD-83 (CORS 96) STATE PLANE COORDINATES NORTH CENTRAL ZONE (METERS) NORTHING (Y) 2110141.387 EASTING (X) 749287.101		
ELLIPSOIDAL ELEVATION (METERS) 195.746 ELLIPSODIAL HEIGHT (METERS) -26.81		NAD-83 (CORS 96) STATE PLANE COORDINATES NORTH CENTRAL ZONE (U.S. SURVEY FEET) NORTHING (Y) 6923022.20051 EASTING (X) 2458286.09720		
NGVD-29 ELEV: 730.12' (FEMA) (U.S. SURVEY FEET)		NAVD-88 ELEV: 730.16' (U.S. SURVEY FEET)		

DESCRIPTION: 3 1/4" ALUMINUM DISK SET IN CONCRETE AT THE SOUTHWEST CORNER OF THE INTERSECTION OF MAIN STREET AND W. NANCE STREET, APPROXIMATELY 40 FEET WEST OF THE CENTERLINE OF MAIN STREET AND 23.5 FEET SOUT OF THE CENTERLINE OF W. NANCE STREET.

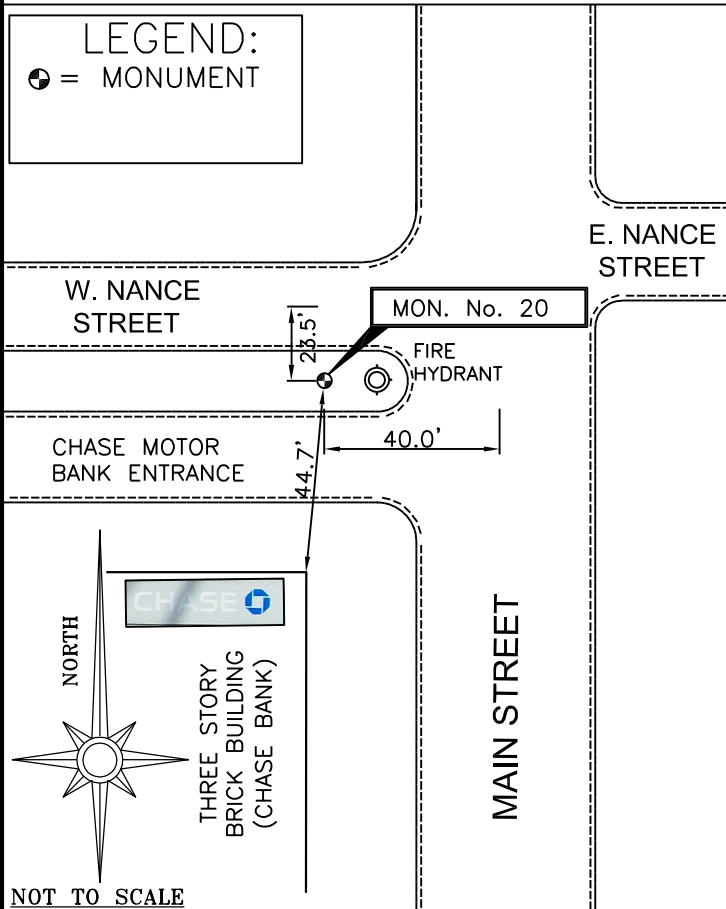


PHOTO TAKEN ON THE WEST SIDE OF MAIN STREET FROM THE SOUTH TO NORTH LOOKING TOWARDS CENTER STREET LOCATED ON THE SOUTH SIDE OF W. NANCE STREET.



CITY OF DUNCANVILLE

GPS CONTROL SHEET

ESTABLISHED BY: BRITAIN & CRAWFORD, LLC.
 LAND SURVEYING & TOPOGRAPHIC MAPPING PH. 817-926-0211

MONUMENT NAME: MON. No. 19	DATE ESTABLISHED: NOVEMBER, 2008	COUNTY: DALLAS	STATE: TEXAS	MAPSCO PAGE NO. 72-C
NAD-83 (CORS 96) GEODETIC POSITION LATITUDE N 032° 38' 44.74727" LONGITUDE W 096° 54' 29.73349"		NAD-83 (CORS 96) STATE PLANE COORDINATES NORTH CENTRAL ZONE (METERS) NORTHING (Y) 2109703.471 EASTING (X) 749323.852		
ELLIPSOIDAL ELEVATION (METERS) 192.675 ELLIPSODIAL HEIGHT (METERS) -26.81		NAD-83 (CORS 96) STATE PLANE COORDINATES NORTH CENTRAL ZONE (U.S. SURVEY FEET) NORTHING (Y) 6921585.47110 EASTING (X) 2458406.67110		
NGVD-29 ELEV: 720.09' (FEMA) (U.S. SURVEY FEET)		NAVD-88 ELEV: 720.08' (U.S. SURVEY FEET)		

DESCRIPTION: 3 1/4" ALUMINUM DISK SET IN CONCRETE AT THE SOUTHEAST CORNER OF THE INTERSECTION OF MAIN STREET AND WHEATLAND ROAD, 15.6 FEET EAST OF THE EAST CURBLINE OF MAIN STREET AND 25.2 FEET SOUTH OF THE SOUTH CURBLINE OF WHEATLAND ROAD.

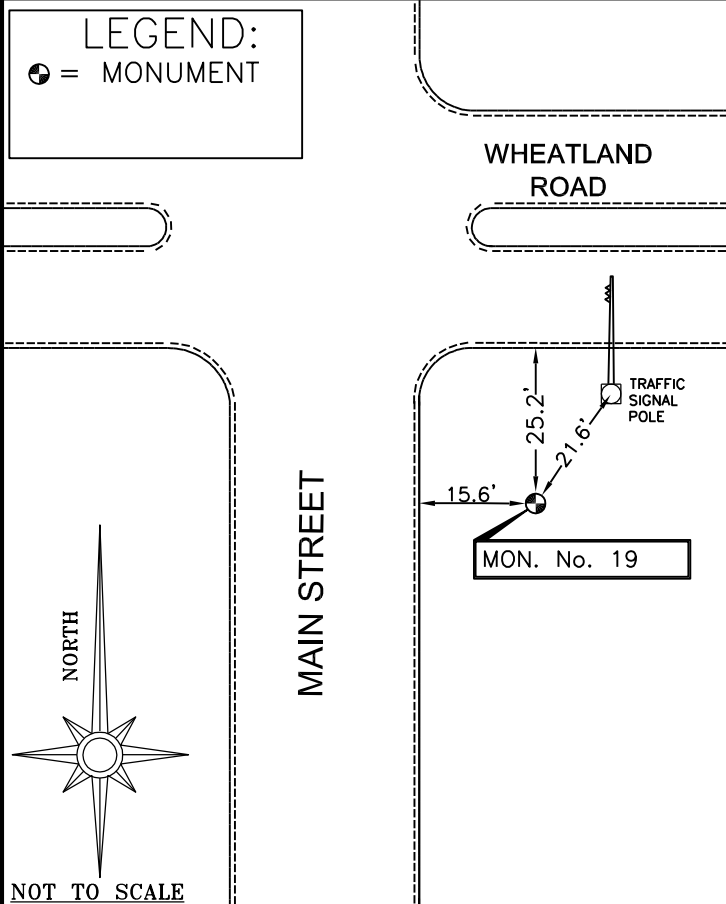


PHOTO TAKEN ON THE EAST SIDE OF MAIN STREET FROM THE SOUTH TO NORTH LOOKING TOWARDS WHEATLAND ROAD.



CITY OF DUNCANVILLE

GPS CONTROL SHEET

ESTABLISHED BY: BRITAIN & CRAWFORD, LLC.
 LAND SURVEYING & TOPOGRAPHIC MAPPING PH. 817-926-0211

MONUMENT NAME: MON. No. 23	DATE ESTABLISHED: NOVEMBER, 2008	COUNTY: DALLAS	STATE: TEXAS	MAPSCO PAGE NO. 62-U
NAD-83 (CORS 96) GEODETIC POSITION LATITUDE N 032° 39' 43.67753" LONGITUDE W 096° 54' 23.27226"		NAD-83 (CORS 96) STATE PLANE COORDINATES NORTH CENTRAL ZONE (METERS) NORTHING (Y) 2111520.979 EASTING (X) 749464.678		
ELLIPSOIDAL ELEVATION (METERS) 198.064 ELLIPSODIAL HEIGHT (METERS) -26.81		NAD-83 (CORS 96) STATE PLANE COORDINATES NORTH CENTRAL ZONE (U.S. SURVEY FEET) NORTHING (Y) 6927548.41193 EASTING (X) 2458868.69774		
NGVD-29 ELEV: 729.14' (FEMA) (U.S. SURVEY FEET)		NAVD-88 ELEV: 729.168' (U.S. SURVEY FEET)		

DESCRIPTION: 3 1/4" ALUMINUM DISK SET IN CONCRETE ON THE EAST SIDE OF MAIN STREET, 45 FEET NORTH OF THE NORTH CURBLINE OF CAMP WISDOM ROAD AND 6.1 FEET EAST OF THE EAST CURBLINE OF MAIN STREET ALSO LYING 34.7 FEET FROM THE SOUTHWEST CORNER OF LOS LUPES MEXICAN RESTAURANT.

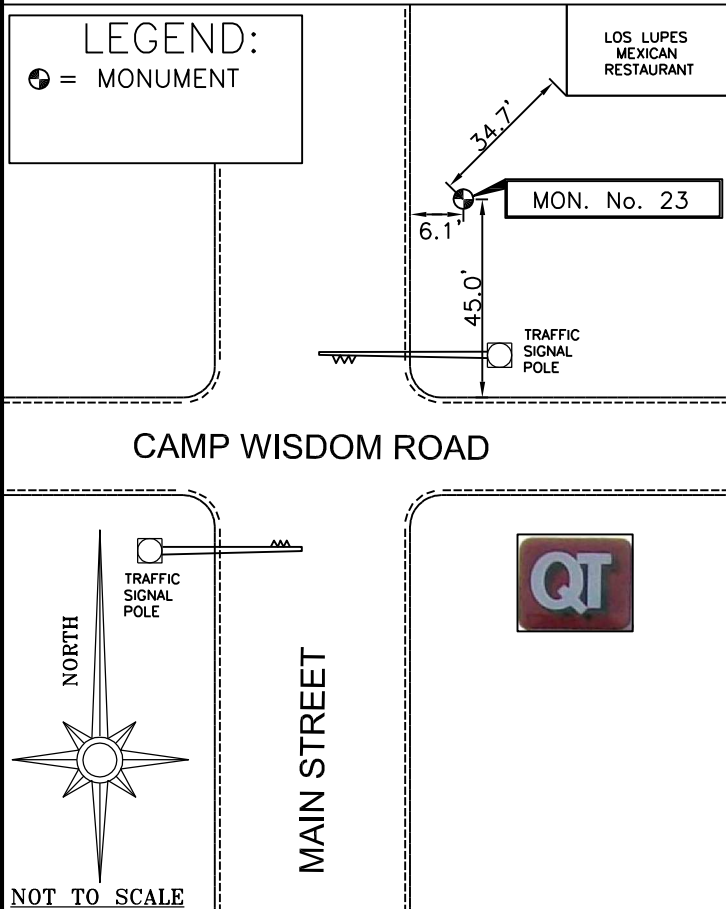


PHOTO TAKEN ON THE EAST SIDE OF MAIN STREET FROM THE NORTH TO SOUTH LOOKING TOWARDS CAMP WISDOM ROAD.

